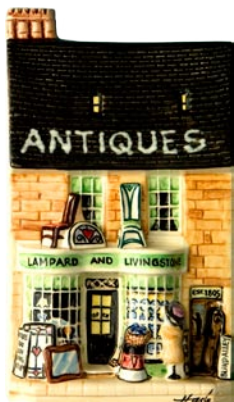


Village Collection

NEW MODELS

Still part of *A Nation of Shopkeepers* and to the same scale these more "villagey" pieces, next to taller ones in real life, look charming side by side.



Village Antiques

This late 1700s building from Uppingham was one of the first to be "listed". The early 1800s frontage has modelled and added bric-a-brac including Art Nouveau chairs, mirrors and lamp, only for this Limited Mould.

LM250 – £65



Ye Olde Pork Pie Shoppe

Dated 1750, since 1851 this building was the first and is now the last bakery of authentic Melton Mowbray pork pies, created by Mary Dickinson. As an early "fast food" the pork pie became mass-produced – just like Art Nouveau and Art Deco!

As DICKINSON & MORRIS OR
MELTON MOWBRAY PORK PIES

Open Edition £50



More Talents Exclusives

Honiton Lace

With a 400 year royal history, the fine thread of Honiton Lace was made into a christening robe for The Queen's family. The unique veil and overdress for Queen Victoria's wedding gown in 1840, is shown right, with a lacemaker in the left window. The Arts & Crafts movement sought to revive such artisanship. Also a fitting theme given Windsor's royal links and Eric's liking for Victoriana.

Talents Exclusive LP20
(on Bath Couture) £85



Egyptian Rooms

After Howard Carter and Lord Carnarvon discovered *The Valley of the Kings* near Luxor in 1922, Egyptian motifs found their way onto everything, including in Art Deco style. The travellers in this ceramic have just returned from an expedition, dumping luggage in the doorway!

Talents Exclusive LP20
(on Oxfam 1 - LM1000) £75



Contact Hazle Ceramics for Stockists
Tel: [+44] (0)1268 270892, Web: www.hazle.com
Talents of Windsor
Toll Free: 0800 169 6729 (UK), 1877 478 4460 (US)
Web: www.etalents.com

© Marilyn Ashmead Craig 2005

Hazle Ceramics

15th Anniversary Event

Eric Knowles at Talents of Windsor

Sunday 11th September 2005



This event has a special focus on *Art Nouveau*, including a new building. *Art Deco* is featured too. Both eras are favourites of TV Antiques Presenter Eric Knowles. Hazle Ceramics also recreated authentic period details with other event themes. The *Village Collection* is launched with two models.



Liberty Art Nouveau

Liberty was founded in 1874. Hazle's model comes from Tudor House, built in 1924 off London's Regent Street. This Retrospective shows the influence of Arts & Crafts style on a Tree of Life tapestry. With their own designers Liberty helped develop Art Nouveau – called *stile Liberty* in Italy! Painted on original bisques, with only 100 cast in 1991-2.

LP8 – £250

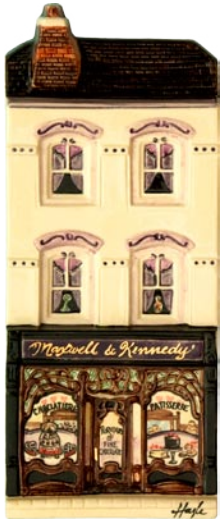
Dimensions (inches): 10H, 4.4W, 1.2D
All ceramics are shown in proportion



Cambridge Art Nouveau

NEW MODEL

Art Nouveau (1890-1910) portrayed flowing lines in a lyrical curvilinear design or the more restrained rectilinear style. It usually took the form of sinuous natural objects – including the female figure!



This late Victorian building from Cambridge has an Art Nouveau front, built for a dairy in 1923. Wooden tracery is in the European curvilinear style with tulip motifs inside the glass of the top panels.



Maxwell & Kennedy

As a long-term trader there, this *chocolatier* seems suited to such an ornate setting.

LP150 – £75

L'Objet D'Art

Art Nouveau pieces such as Tiffany lamps from New York, English Minton and Linthorpe vases and a French Gallé lamp are on display, with names of famous makers listed on the door.

Event Piece (certificate signed by Eric Knowles)
LP50 all painted by Hazle – £95



Art Nouveau



La Belle Epoch

The very first Art Nouveau print, promoting Wren's City Churches, started a major trend in illustration. Works on this ceramic are from Mucha, Mackmurdo and Beardsley, including his motifs for Le Morte d'Arthur. (The original Belle Epoch was 1871-1914, the great Arts era in Paris.) Painted on Glyn's House, an Art Nouveau building with sculpted beauties from London's Old Bond Street.



Event Piece (certificate signed by Eric Knowles)
LP50 – £140

Period Furniture

Many pieces, plus the cast door and fireplace added outside, are in the style of Charles Rennie Mackintosh, famed for very high-backed chairs in black lacquer. Ceramics fill upper windows. Rose and peacock motifs are classic Art Nouveau – as is the lettering on the signs.

Talents Exclusive LP20
(on Grantham LE1000) £85



Art Deco

Art Deco (1908-35) became prominent in the 1920s making bold use of sweeping curves, angular geometric forms and a palette of intense colours.



Ocean Cocktail Bar

Hazle's Art Deco Cinema is the perfect backdrop for a stunning effect of black, chrome and striking colour accents, typical of the style. At each side "flappers" (unconventional young ladies) dance Charleston high kicks! Cocktail bars proliferated in the period, epitomising the glamour and sophistication of Art Deco.

LP30 (on Cinema LE2000) £85

Decodence

With Art Deco jewellery and ceramics in the windows, stylised flowers and vivid hues are painted on the building.

LP30 (on Pateley Bridge) £60



Light Fantastic

Mass-produced lighting reflected the popular taste for Art Deco. Dramatic styles, glass shades and the use of chrome abounded. The term *light fantastic* first appeared in Milton's poem L'Allegro in 1645!

LP30 (on St Giles LE750) £75